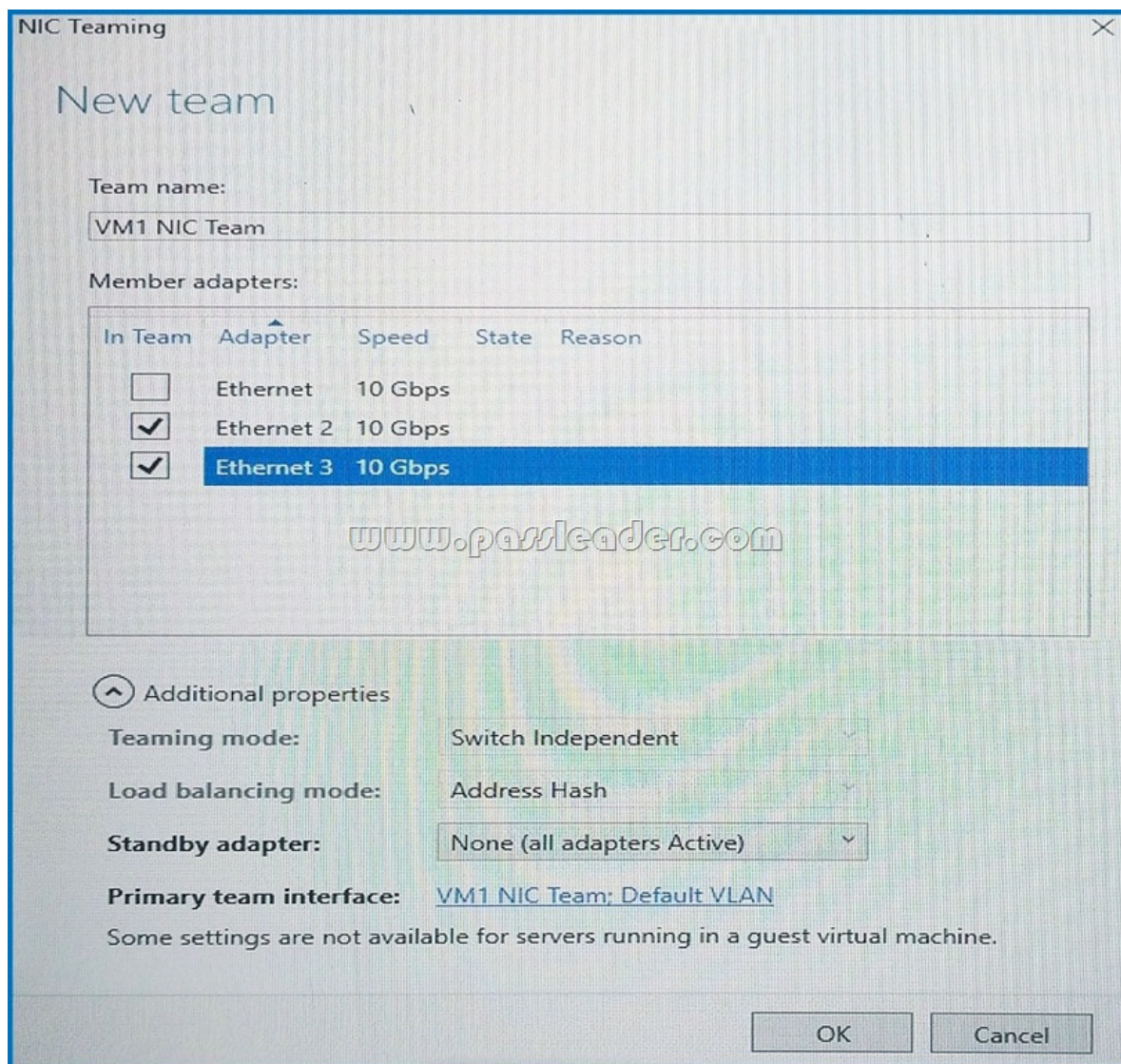


[Jan-2017 Dumps Training PassLeader New 70-743 97q VCE and PDF Dumps To Pass Exam

New Updated 70-743 Exam Questions from PassLeader 70-743 PDF dumps! Welcome to download the newest PassLeader 70-743 VCE dumps: <http://www.passleader.com/70-743.html> (97 Q&As) Keywords: 70-743 exam dumps, 70-743 exam questions, 70-743 VCE dumps, 70-743 PDF dumps, 70-743 practice tests, 70-743 study guide, 70-743 braindumps, Upgrading Your Skills to MCSA: Windows Server 2016 Exam P.S. Free 70-743 dumps download from Google Drive:

https://drive.google.com/open?id=0B-ob6L_QjGLpdUZIRVBrYVdFb28 **NEW QUESTION 73** You have an Active Directory domain that contains several Hyper-V hosts that run Windows Server 2016. You plan to deploy network virtualization and to centrally manage Datacenter Firewall policies. Which component must you install for the planned deployment? A. the Routing role service B. the Canary Network Diagnostics feature C. the Network Controller server role D. the Data Center Bridging feature **Answer: C** **Explanation:** Using Windows PowerShell, the REST API, or a management application, you can use Network Controller to manage the following physical and virtual network infrastructure: * Datacenter Firewall This Network Controller feature allows you to configure and manage allow/deny firewall Access Control rules for your workload VMs for both East/West and North/South network traffic in your datacenter. The firewall rules are plumbed in the vSwitch port of workload VMs, and so they are distributed across your workload in the datacenter. Using the Northbound API, you can define the firewall rules for both incoming and outgoing traffic from the workload VM. You can also configure each firewall rule to log the traffic that was allowed or denied by the rule. * Hyper-V VMs and virtual switches * Remote Access Service (RAS) Multitenant Gateways, Virtual Gateways, and gateway pools * Load Balancers References: <https://technet.microsoft.com/en-us/library/dn859239.aspx> **NEW QUESTION 74** You have a virtual machine named VM1 that runs Windows Server 2016. VM1 hosts a service that requires high network throughput. VM1 has a virtual network adapter that connects to a Hyper-V switch named vSwitch1. vSwitch1 has one network adapter. The network adapter supports Remote Direct Memory Access (RMDA), the single root I/O virtualization (SR-IOV) interface, Quality of Service (QoS), and Receive Side Scaling (RSS). You need to ensure that the traffic from VM1 can be processed by multiple networking processors. Which Windows PowerShell command should you run in the host of VM1? A. Set-NetAdapterRss B. Set-NetAdapterRdma C. Set-NetAdapterSriov D. Set-NetAdapterQoS **Answer: A** **Explanation:** The Set-NetAdapterRss cmdlet sets the receive side scaling (RSS) properties on a network adapter. RSS is a scalability technology that distributes the receive network traffic among multiple processors by hashing the header of the incoming packet. Without RSS Windows Server 2012/2016; network traffic is received on the first processor which can quickly reach full utilization limiting receive network throughput. Many properties can be configured using the parameters to optimize the performance of RSS. The selection of the processors to use for RSS is an important aspect of load balancing. Most of the parameters for this cmdlet help to determine the processors used by RSS. **NEW QUESTION 75** You have a server named Server1 that runs Windows Server 2016. Server1 is a Hyper-V host that hosts a virtual machine named VM1. Server1 has three network adapter cards that are connected to virtual switches named vSwitch1, vSwitch2 and vSwitch3. You configure NIC Teaming on VM1 as shown in the exhibit. (Click the Exhibit button.)



You need to ensure that VM1 will retain access to the network if a physical network adapter card fails on Server1. What should you do? A. From Hyper-V Manager on Server1, modify the settings of VM1.B. From Windows PowerShell on VM1, run the Set-VmNetworkAdapterTeamMapping cmdlet.C. From Windows PowerShell on Server1, run the Set-VmNetworkAdapterFailoverConfiguration cmdlet.D. From Windows PowerShell on Server1, run the Set-VmSwitch cmdlet.

Answer: B**Explanation:**The Set-VmNetworkAdapterTeamMapping cmdlet will establish an affinity between virtual NIC (vNIC or vmNIC) and a team member. If the physical NIC encounters any issue, the affinitized vNIC or vmNIC will failover to another team member.

NEW QUESTION 76You have a server named Server1 that runs Windows Server 2016. You plan to deploy Internet Information Services (IIS) in a Windows container. You need to prepare Server1 for the planned deployment. Which three actions should you perform? Each correct answer presents part of the solution. A. Install the Container feature.B. Install Docker.C. Install the Base Container Images.D. Install the Web Server role.E. Install the Hyper-V server role. **Answer: ABC****Explanation:**

Step 1 (A): The container feature needs to be enabled before working with Windows containers. To do so run the following command in an elevated PowerShell session.`Enable-WindowsOptionalFeature -Online -FeatureName containers -All`Step 2 (B): Docker is required in order to work with Windows containers.Note: First install the OneGet PowerShell module.`Install-Module -Name DockerMsftProvider -Repository PSGallery -Force`Next you use OneGet to install the latest version of Docker.`Install-Package -Name docker -ProviderName DockerMsftProvider`Step 3 (C): Install Base Container ImagesWindows containers are deployed from templates or images. Before a container can be deployed, a container base OS image needs to be downloaded. The following commands will download the Nano Server base image.`Pull the Nano Server base image.docker pull microsoft/nanoserver`

NEW QUESTION 77Your network contains an Active Directory domain. The domain contains two Hyper-V hosts. You plan to perform live migrations between the hosts. You need to ensure that the live migration traffic is authenticated by

using Kerberos. What should you do first? A. From Server Manager, install the Host Guardian Service server role on a domain controller. B. From Active Directory Users and Computers, add the computer accounts for both servers to the Cryptographic Operators group. C. From Active Directory Users and Computers, modify the Delegation properties of the computer accounts for both servers. D. From Server Manager, install the Host Guardian Service server role on both servers. **Answer: C**
Explanation: If you have decided to use Kerberos to authenticate live migration traffic, configure constrained delegation before you proceed to the rest of the steps. To configure constrained delegation:- Open the Active Directory Users and Computers snap-in.- From the navigation pane, select the domain and double-click the Computers folder.- From the Computers folder, right-click the computer account of the source server and then click Properties.- In the Properties dialog box, click the Delegation tab.- On the delegation tab, select Trust this computer for delegation to the specified services only. Under that option, select Use Kerberos only. **NEW QUESTION 78**
Hotspot Question You have a four-node Hyper-V cluster named Cluster1. A virtual machine named VM1 runs on Cluster1. VM1 has a network adapter that connects to a virtual switch named Network1. You need to prevent a network disconnection on VM1 from causing VM1 to move to another cluster node. What command should you run? To answer, select the appropriate options in the answer area.

Answer Area

```
Remove-ClusterVMMonitoredItem -VirtualMachine VM1
Set-VM -VMName VM1
Set-VMNetworkAdapter -VMName VM1
Set-VMSwitch -Name Network1
```

```
EventSource Network
-iovInterruptModeration Off
-iovWeight 1
-NotMonitoredInCluster $true
-RouterGuard Off
```

www.passleader.com

Answer:

Answer Area

```
Remove-ClusterVMMonitoredItem -VirtualMachine VM1
Set-VM -VMName VM1
Set-VMNetworkAdapter -VMName VM1
Set-VMSwitch -Name Network1
```

```
EventSource Network
-iovInterruptModeration Off
-iovWeight 1
-NotMonitoredInCluster $true
-RouterGuard Off
```

www.passleader.com

Explanation: The Set-VMNetworkAdapter cmdlet configures features of the virtual network adapter in a virtual machine or the management operating system. The Set-VMNetworkAdapter cmdlet parameter -iovInterruptModeration<iovInterruptModerationValue> specifies the interrupt moderation value for a single-root I/O virtualization (SR-IOV) virtual function assigned to a virtual network adapter. Allowed values are Default, Adaptive, Off, Low, Medium, and High. If Default is chosen, the value is determined by the physical network adapter vendor's setting. **NEW QUESTION 79**
You have an Active Directory domain named Contoso.com. The domain contains servers named Server1, Server2 and Server3 that run Windows Server 2016. Server1 and Server2 are nodes in a Hyper-V cluster named Cluster1. You add a Hyper-V Replica Broker role named Broker1 to Cluster1. Server3 is a Hyper-V server. A virtual machine named VM1 runs on Server3. Live Migration is enabled on all three servers and it is configured to use Kerberos authentication only. You need to ensure that you can perform the migration of VM1 to Server2. What should you do? A. Add the Server computer account to the Replicator group on Server1 and Server2. B. Modify the Delegation settings on the Server3 computer account. C. Modify the Storage Migration settings on Server3. D. Modify the Cluster permissions for Cluster1. **Answer: B**
Explanation: If you have decided to use Kerberos to authenticate live migration traffic, configure constrained delegation before you proceed to the rest of the steps. To configure constrained delegation:- Open the Active Directory Users and Computers snap-in. For example, to do this from Server Manager, select the server if it not already selected. After the server is selected, click Tools, and then click Active Directory Users and Computers. This opens the Active Directory Users and Computers snap-in.- From the navigation pane, select the domain and double-click the Computers folder.- From the Computers folder, right-click the computer account of the source server and then click Properties.- In the Properties dialog box, click the Delegation tab.- On the delegation tab, select Trust this computer for delegation to the specified services only. Under that option, select Use Kerberos only.- Click Add.Etc.References:

[https://technet.microsoft.com/en-us/library/jj134199\(v=ws.11\).aspx](https://technet.microsoft.com/en-us/library/jj134199(v=ws.11).aspx) **NEW QUESTION 80?..** Download the newest PassLeader 70-743 dumps from passleader.com now! 100% Pass Guarantee! 70-743 PDF dumps & 70-743 VCE dumps:
<http://www.passleader.com/70-743.html> (97 Q&As) (New Questions Are 100% Available and Wrong Answers Have Been Corrected! Free VCE simulator!) P.S. Free 70-743 Exam Dumps Collection On Google Drive:
https://drive.google.com/open?id=0B-ob6L_QjGLpdUZIRVBrYVdFb28