

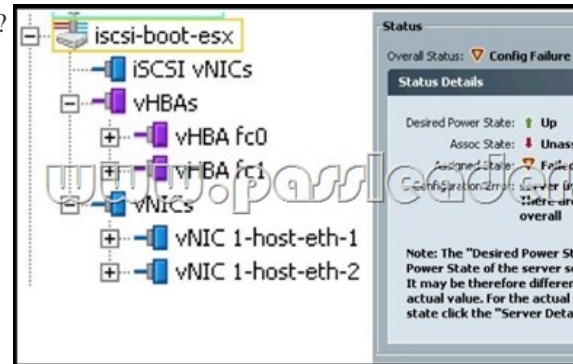
(New Updated) Download Free Cisco 350-018 617q Study Materials With New Added Exam Questions (31-60)

What's the secret of easily passing new 350-018 exam? PassLeader have been updated the 350-018 617q exam dumps with the newest exam questions. We offer the latest 350-018 617q PDF dumps and VCE dumps with New Version VCE Player for free download to ensure your 350-018 exam pass. Now visit www.passleader.com and get the 100 percent pass ensure 350-018 617q braindump! keywords: 350-018 exam,350-018 exam dumps,350-018 617q exam questions,350-018 617q pdf dumps,350-018 vce dumps,350-018 617q braindump,CCIE Security Written Exam, v4.0

Why Not Try **PassLeader New Premium 350-018 Exam Dumps?**

 602 Q&As Price: \$125.99	 Leader of IT Certifications BONUS !!! Free VCE Player 617 Q&As Price: \$99.99 Coupon Code -- CELEB	 602 Q&As Price: \$139.98
--	--	---

NEW QUESTION 31 Refer to the exhibit. What is the most likely reason for the error?



A. There are not enough local hard drives to satisfy the local disk configuration policy. B. One of the resource pools is depleted (WWN, MAC, UUID). C. The destination blade is equipped with an M61KR-B adapter. D. The server is not equipped with adequate memory. E. A User Ack maintenance policy has been applied. Answer: C
 NEW QUESTION 32 Refer to the exhibit. How many additional chassis equipped with Cisco UCS 2204XP I/O Modules could be connected at maximum bandwidth without exceeding the existing port licenses?

Properties	Properties
Name: ETH_PORT_ACTIVATION_PKG Scope: A Absolute Quantity: 18 Used Quantity: 0 Desired Quantity: 18 Operational State: License Ok Grace Period Used: 0 Days Peer License Count Comparison: Matching	Name: ETH_PORT_ACTIVATION_PKG Scope: B Absolute Quantity: 18 Used Quantity: 8 Desired Quantity: 18 Operational State: License Ok Grace Period Used: 0 Days Peer License Count Comparison: Matching

A. 1 B. 2 C. 3 D. 4 E. 5 Answer: B
 NEW QUESTION 33 Refer to the exhibit. Assume that there is no disjoint Layer 2 configuration. Based on the output, what will happen if uplink eth1/7 on FI-A fails?

```

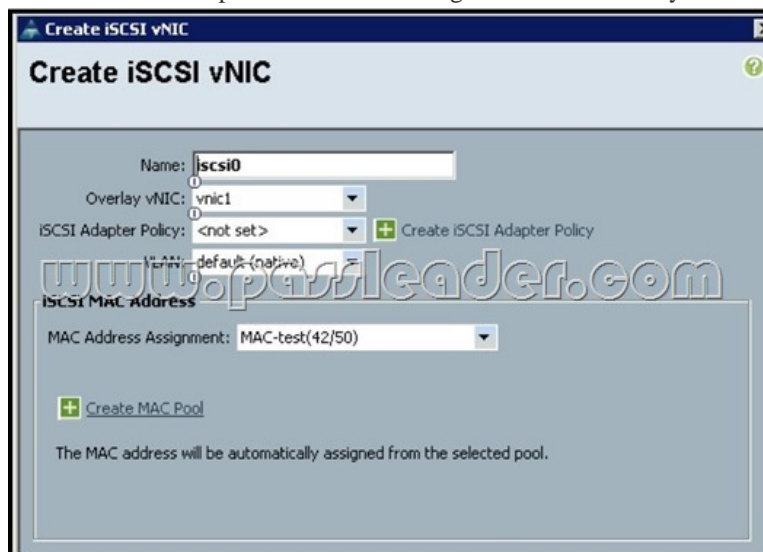
UCS-A /eth-uplink/pin-group # show expend
Ethernet Pin Group:
  Name: Sample-PG
  Ethernet Pin Target:
  Fabric Endpoint:
    A fabric/lan/A/phys-slot-1-port-7
    B fabric/lan/B/phys-slot-1-port-7

UCS-A /chassis/server # scope service-profile server 2/7
UCS-A /org/service-profile # scope vnic eth0
UCS-A /org/service-profile/vnic # show detail | include Pin
(Pin Group: Sample-PG)

UCS-A /eth-uplink # show interface
Interface:
Fabric ID Slot Port Admin State Oper State State Reason Lic St
Period
-----
A 1 7 Enabled Up
A 1 8 Enabled Up
B 1 7 Enabled Up
B 1 8 Enabled Up
    
```

A. The host will lose Ethernet uplink connectivity on FI-A. B. Fabric failover will force the vNIC that is bound to FI-A to use uplink eth1/7 on FI-B. C. Cisco UCS Manager will disable the host vNIC that is connected to FI-A. D. Traffic from any hosts

using this pin group will use e1/8 on FI-A. Answer: D NEW QUESTION 34 Refer to the exhibit. You are setting up a service profile to iSCSI boot using a Cisco UCS VIC 1240. The service profile returns a configuration error when you attempt to associate it. What is the problem, based on the exhibit?



A. The iSCSI adapter policy is not set. B. iSCSI boot will not work with the default VLAN. C. The default VLAN should not be set as native on the overlay vNIC. D. The MAC address assignment is invalid. Answer: D NEW QUESTION 35

You plan to add a new VLAN to your updating service profile template. Assuming that the default maintenance policy is configured, which statement about applying this change is true? A. The change will be applied immediately once the blade is rebooted. B. The change will be deferred until the user acknowledges. C. The change will be applied immediately with no disruption to any bound service profiles. D. The change will generate an impact summary message. E. The change will require all bound service profiles to be unbound. Answer: C NEW QUESTION 36

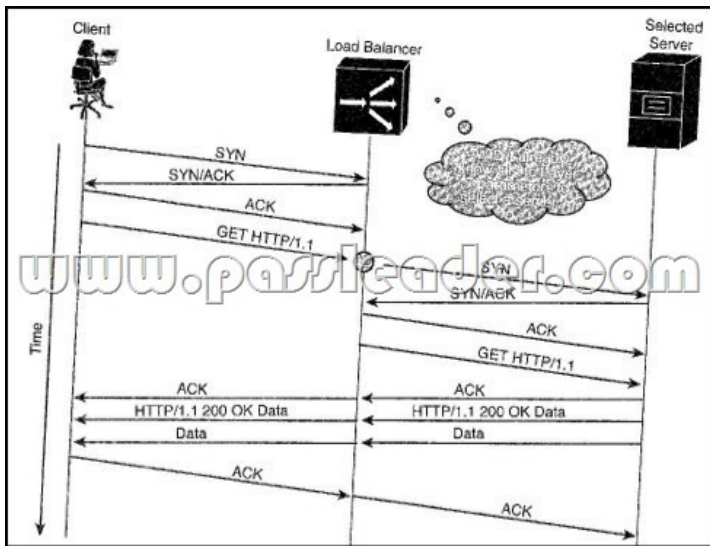
You have configured a Cisco UCS C460 M2 Rack-Mount Server with two VIC 1225 adapters for single-wire management with Cisco UCS Manager. Which statement correctly describes the operation of these adapters? A. One VIC is designated to carry management, and the other VIC is designated to carry data traffic. B. Both VICs will be used for management and data traffic. C. One VIC will carry management, and both VICs will carry data traffic. D. The Cisco UCS C460 M2 does not support two VIC 1225 adapters simultaneously. Answer: C NEW QUESTION 37

Which two items have an impact on the maximum number of virtual interfaces that can be created on a virtual interface card? (Choose two.) A. Number of blades in the chassis B. Number of acknowledged links between the Fabric Interconnect and the I/O module C. Number of connected uplinks D. Number of Fabric Interconnect port ASICs used by uplinks E. Number of Fabric Interconnects F. Number of VIC Answer: BD NEW QUESTION 38

What is the purpose of the management interface monitoring policy? A. to monitor the management interface counters for errors and drops B. to prevent VM traffic from being black-holed during a cluster switchover C. to sync MAC address tables between peer fabric interconnects D. to ensure that the management interface of the managing fabric interconnect can reach the gateway Answer: D NEW QUESTION 39

How are unified port expansion modules for Cisco UCS 6200 Series Fabric Interconnects licensed? A. All ports are fully licensed by default. B. The first eight ports on the module are licensed by default. C. The expansion modules contribute eight licenses to the global pool by default. D. The expansion modules contribute six licenses to the global pool by default. E. The first six ports on the module are licensed by default. Answer: D NEW QUESTION 40

Refer to the exhibit. In the figure, the load balancer acts a transparent TCP proxy, and establishes the connection with the client on behalf of the real server. What is this type of spoofing called?



A. Delayed binding B. Software-based load balancing C. Transport proxy D. Application binding Answer: A
 QUESTION 41 A load balancer performs an operation on a predefined parameter, such as the IP address, HTTP cookie, or URL, when a new connection is made so that another connection with the same parameter will always reach the same server. Which load-balancing predictor does this statement describe? A. Round robin B. Least-connections C. Hashing D. Least-loaded Answer: C
 QUESTION 42 What are the three benefits of SSL offload? (Choose three.) A. Total offload of encryption from the servers B. Partial offload of encryption from the servers C. Layer 5 to 7 awareness for Layer 7 switching D. Layer 5 to 7 awareness for Layer 5 to 7 switching E. Public certificates required on both load balancer and the real server F. Public certificate required only on load balancer Answer: ACF
 QUESTION 43 Refer to the exhibit. Which type of SSL offload configuration is shown in the output?

```

rserver SERVER1
 ip address 10.1.0.11
 inservice

serverfarm host SFARM1
 description SERVER FARM 1 FOR SSL
 probe GEN_HTTP
 rserver SERVER1 443
 inservice

parameter-map type http PARAMMAP_HTTP
 server-conn reuse
 case-insensitive
 persistence-rebalance
parameter-map type ssl PARAMMAP_SSL
 cipher RSA_WITH_RC4_128_MD5
 cipher RSA_WITH_RC4_128_SHA
 cipher RSA_WITH_DES_CBC_SHA
 version all

ssl-proxy service SSL_PSERVICE_CLIENT
 ssl advanced-options PARAMMAP_SSL

class-map type http loadbalance match-all L7_SERVER_CLASS
 description Sticky for SSL Testing
 2 match http url .*\.jpg
 3 match source-address 192.168.130.0 255.255.255.0

policy-map type loadbalance first-match L7_SSL-POLICY
 class L7_SERVER_CLASS
  serverfarm SFARM1
  insert-http SRC_IP header-value "%s"
  insert-http I_AM header-value "SSL INIT"
  insert-http SRC_Port header-value "%ps"
  insert-http DEST_IP header-value "%id"
  insert-http DEST_Port header-value "%pd"
  ssl-proxy client SSL_PSERVICE_CLIENT
    
```

A. SSL termination B. SSL initiation C. End-to-end SSL D. SSL testing Answer: B
 QUESTION 44 In the basic DNS resolution process, which component receives the query and sends it to the location that knows the IP address for the destination? A. DNS resolver B. D-proxy C. Root server D. Intermediate server E. Authoritative server Answer: B
 QUESTION 45 Which four options describe benefits of the global load-balancing solution? (Choose four.) A. Device status within the data center B. Performance granularity C. Centralized client access D. Intelligent traffic management E. Reacts quickly for availability

only F. Server monitoring statistics G. Round robin support only for load-balancing Answer: ABDF

Why Not Try PassLeader Ne

Pass4sure PL Pas

602 Q&As
Price: \$125.99

BONUS !!!
Free VCE P

<http://www.passleader.com/350-018.html> NEW QUESTION 46 Which two statements about dynamic port binding are true? (Choose two.) A. The port is connected when the VM is powered on and disconnected when the VM is powered off. B. The port is created when the VM is powered on and destroyed when the VM is powered off. C. The max-port limits are enforced. D. The max-port limits are not enforced. E. The port is always connected. Answer: AC NEW QUESTION 47 Which two methods can be used in communications between the Cisco Nexus 1000V VEM and the VSM? (Choose two.) A. Routed TCP traffic using HTTPS B. Routed UDP traffic using port 4785 C. Routed UDP traffic using port 7845 D. Layer 2 direct traffic using MAC addresses E. Layer 2 broadcast traffic F. Routed TCP traffic using port 4785 G. Routed TCP traffic using port 7845 Answer: BD NEW QUESTION 48 Refer to the exhibit. An administrator is setting up the VSM and VEM in Layer 3 mode. The administrator adds a host to the distributed switch in VMware, but does not see the module join the VSM. Given the configuration in the exhibit, which three configuration items must be included in the configuration? (Choose three.)

```
port-profile type Ethernet system-uplink
vmware port-group
switchport mode trunk
switchport trunk allowed vlan 1,150,598-599
no shutdown
system vlan 1,150,598-599
state enabled
www.passleader.com
port-profile type vethernet 13_vmk
vmware port-group
switchport mode access
switch access vlan 1400
no shutdown
system vlan 1400
state enabled
```

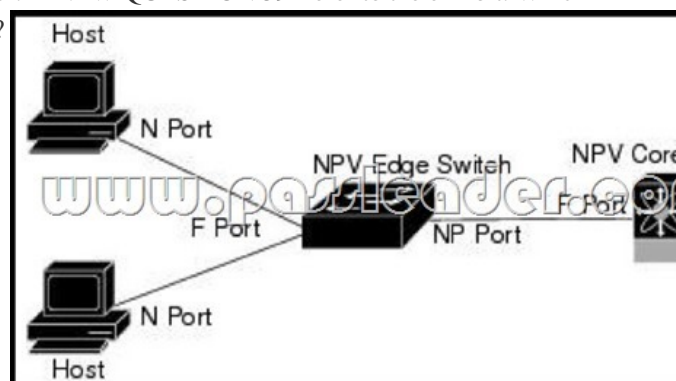
A. The vEthernet Port Profile parameter must be set to Capability I3control. B. The vEthernet Port Profile parameter must be set to VSM I3control. C. The Ethernet Port Profile parameter must be set to System VLAN 1400. D. The Ethernet Port Profile parameter must be set to VLAN 1400 in the allowed trunk. E. The Ethernet Port Profile parameter must be set to Capability I3control. F. The vEthernet Port Profile parameter must be set to Mode Trunk. G. The vEthernet Port Profile parameter must be set to VEM I3control. Answer: ACD NEW QUESTION 49 Which of the following is an advanced networking function performed by VEM? A. QoS B. Snooping C. VSAN creation D. VLAN pruning Answer: A NEW QUESTION 50 Refer to the exhibit. The network administrator is adding a new Cisco Nexus 1000V Switch to vCenter, but does not see the new switch under the vCenter networking tab. Which option describes the most correct cause of this error?

```
Command:
VSM# show svs connections
connection VC:
ip address: 10.10.10.30
remote port: 80
protocol: vmware-vim https
certificate: default
datacenter name: DC1
DVS uuid: 67 32 30 50 a6 d2 49 64-9e 1c 5f 49 e3
config status: Disabled
operational status: disconnected
sync status: -
version: -

ERROR:
VSM-PRI-188# conf
VSM-PRI-188(config)# svs connection VC
VSM-PRI-188(config-svs-conn)# connect
ERROR: [VMWARE-VIM] Extension key was not registered
```

A. There is a missing control VLAN in the VSM configuration. B. There is a missing packet VLAN in the VSM configuration. C. VSM has no network connection to vCenter. D. The VSM extension key is not installed on vCenter. E. The vCenter extension key is not installed on VSM. Answer: D NEW QUESTION 51 Which statement about FabricPath is correct? A. In FabricPath, FTag is the 10-bit field in FabricPath encapsulation that identifies the topology or distribution tree. B. In FabricPath,

FTag is the 8-bit field in FabricPath encapsulation that identifies the topology or distribution tree. C. In FabricPath, the FTag is the 16-bit field in FabricPath encapsulation that identifies the topology or distribution tree. D. In FabricPath, the FTag is the 32-bit field in FabricPath encapsulation that identifies the topology or distribution tree. Answer: A NEW QUESTION 52 Which two options describe devices as they operate in FabricPath topologies? (Choose two.) A. Edge (or leaf) devices: These devices have ports that are connected to classic Ethernet devices (servers, firewalls, router ports, and so on) and ports that are connected to the FabricPath cloud (or FabricPath ports). Edge devices are able to map a MAC address to the destination switch ID. B. Spine devices: These devices exclusively interconnect edge devices. Spine devices switch exclusively based on the destination switch ID. C. Edge (or leaf) devices: These devices have ports that are connected to classic Ethernet devices (servers, firewalls, router ports, and so on) and ports that are connected to the FabricPath cloud (or FabricPath ports). Edge devices are able to map a source address to the destination switch ID. D. Spine devices: These devices exclusively interconnect edge devices. Spine devices switch exclusively based on the source switch ID. Answer: AB NEW QUESTION 53 What are the two FEX connection modes? (Choose two.) A. Hard-pinning mode B. Soft-pinning mode C. Port channel mode D. Physical-pinning mode E. Clan pinning mode Answer: AC NEW QUESTION 54 How many licenses are provided with the purchase of the Cisco UCS 6296 fabric interconnect? A. 18 B. 16 C. 12 D. 8 Answer: A NEW QUESTION 55 What is the default burst in a LAN QoS policy? A. 10240 B. 9216 C. 20480 D. 1548 Answer: A NEW QUESTION 56 Which feature must be enabled on the upstream Fibre Channel switch if the fabric interconnect is configured in end-host mode? A. NPV B. NPIV C. Zoning D. Smart Zoning Answer: B NEW QUESTION 57 Fault suppression allows you to suppress SNMP trap and Call Home notifications during a planned maintenance period. Which three commands are necessary to activate these suppression policies in Cisco UCS Manager? (Choose three.) A. Default-chassis-all-maint B. Default-chassis-phys-maint C. Default-fex-all-maint D. Default-FI-phys-maint E. Default-blade-phys-maint F. Default-vic-phys-maint Answer: ABC NEW QUESTION 58 How many traffic monitoring sessions can you create on Cisco UCS Manager? A. 16 B. 8 C. 24 D. 32 Answer: A NEW QUESTION 59 Refer to the exhibit. Which statement about the interface that is connected to the NPV core switch is true?



A. The switch that connects to the hosts is identified in the design as an NPV edge switch, and the port that connects to the core is an NP port. B. The interface that is connected to the NPV switch will need to be configured as an N-Port. C. The interface that is connected to the NPV core will become an FP port. D. The link between the NPV core switch and edge will come up as an E port. Answer: A NEW QUESTION 60 When an NP port becomes operational, the NP switch first logs itself into the core switch by sending a FLOGI request (using the port WWN of the NP port). What will occur next? A. The switch registers with the fabric name server. B. The switch will perform a PLOGI to the port login server. C. The switch will register parameters using FDISC. D. The NPV switch will perform a PLOGI using FDISC to register with the fabric name server. Answer: A

Why Not Try PassLeader

Pass4sure PLF

602 Q&As

Price: \$125.99

BONUS Free 1

<http://www.passleader.com/350-018.html>