

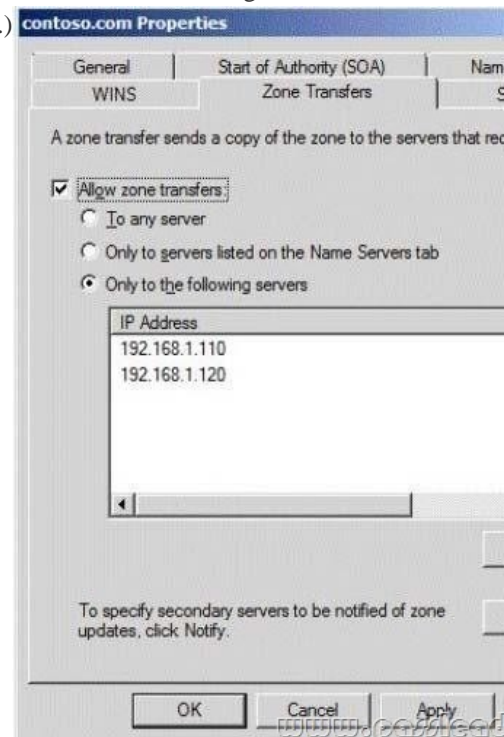
[Pass Ensure VCE Dumps PassLeader Premium 70-640 Exam Questions For Free Reading (541-560)]

Download the newest 70-640 vce dumps or 70-640 pdf dumps to prepare TS: Windows Server 2008 Active Directory, Configuring Exam. Now, PassLeader has published the new 651q 70-640 exam dumps with PDF and VCE file download, PassLeader's 70-640 study guide with 651q 70-640 braindumps has been corrected all the questions and answers, also, all new 70-640 exam questions have been added, which will help you passing 70-640 exam easily. Download the 70-640 practice test with new questions from PassLeader quickly! keywords: 70-640 exam,651q 70-640 exam dumps,651q 70-640 exam questions,70-640 pdf dumps,70-640 practice test,70-640 vce dumps,70-640 study guide,70-640 braindumps,TS: Windows Server 2008 Active Directory, Configuring Exam

Why Not Try PassLeader New Premium 70-640 Exam Dumps?

 ↓ Banned By Microsoft Not Available	 Leader of IT Certifications ↓ 651 Q&As Price: \$99.99 BONUS !!! Free VCE Player Coupon Code -- CELEB	 ↓ 199 Q&As Price: \$124.99
--	---	---

QUESTION 541 Your network contains an Active Directory domain named contoso.com. The Zone Transfers settings of contoso.com are configured as shown in the Zone Transfers exhibit. (Click the Exhibit button.)



The Name Servers settings of contoso.com are configured as shown in the Name Servers exhibit. (Click the Exhibit button.)



To answer, complete each statement according to the information presented in the exhibits. ... can be added successfully for contoso.com on 192.168.1.130.

... can be added successfully for contoso.com on 192.168.1.130.

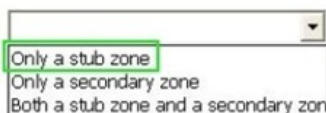
... can be added successfully for contoso.com on 192.168.1.120.

... can be added successfully for contoso.com on 192.168.1.130.

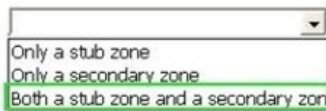
... can be added successfully for contoso.com on 192.168.1.120.

www.passleader.com

Answer: ... can be added successfully for contoso.com on 192.168.1.130.



... can be added successfully for contoso.com on 192.168.1.120.



www.passleader.com

QUESTION 542 Your network contains an Active Directory domain named contoso.com. The domain contains a domain controller named DC1 that runs Windows Server 2008 R2. You need to increase the amount of Active Directory diagnostic information logged to the Event Viewer on DC1. What should you do?
 A. Modify the properties of the objects in the Active Directory Diagnostics Data Collector Set (DCS).
 B. Modify the properties of the System Log and the Application Log.
 C. Modify the flags attribute of DC1.
 D. Modify the settings in the HKey_Local_MachineSYSTEMCurrentControlSetservicesNTDS\Diagnostics registry key.

Answer: D
 QUESTION 543 Your network contains an Active Directory domain named contoso.com. The domain contains an enterprise certification authority (CA). You plan to delegate certificate enrollment for Smartcard Logon certificates to a user named User1. User1 is the member of a group named CONTOSODElegatedAdmins. You need to recommend a solution to provide User1 with the ability to enroll for Smartcard Logon certificates on behalf of other domain users. What should you include in the recommendation?
 A. Duplicate the Smartcard Logon certificate template. Modify the Extensions settings and the Request Handling settings of the new template.
 B. Modify the Issuance Requirements settings and the Security settings of the Smartcard

Logon certificate template.C. Modify the Extensions settings and the Request Handling settings of the Smartcard Logon certificate template.D. Duplicate the Smartcard Logon certificate template. Modify the Issuance Requirements settings and the Security settings of the new template. Answer: D QUESTION 545Your network contains an Active Directory domain named contoso.com. You need to ensure that when computers are joined manually to the domain by using the System Properties, the computer account of the computers is created automatically in an organizational unit (OU) named NewComputers. Which command should you run? A. dsmtgmt.exeB. redircmp.exeC. csvde.exeD. computerdefaults.exe Answer: B QUESTION 546A corporate network includes an Active Directory Domain Services (AD DS) forest that contains two domains. All servers run Windows Server 2008 R2. All domain controllers are configured as DNS servers. A standard primary zone for dev.contoso.com is stored on a member server. You need to ensure that all domain controllers can resolve names from the dev.contoso.com zone. What should you do? A. On one domain controller, create a stub zone. Configure the stub zone to replicate to all DNS servers in the forest.B. On one domain controller, create a stub zone. Configure the stub zone to replicate to all DNS servers in the domain.C. On one domain controller, create a conditional forwarder. Configure the conditional forwarder to replicate to all DNS servers in the domain.D. On the member server, create a secondary zone. Answer: A QUESTION 547Your network contains an Active Directory domain named contoso.com. The domain contains a domain controller named DC1. You have a member server named Server1. Both DC1 and Server1 have the DNS Server server role installed. On DC1, you create an Active Directory-integrated zone named adatum.com. You need to ensure that Server1 receives a copy of the zone. Which two actions should you perform? (Each correct answer presents part of the solution. Choose two.) A. Create a secondary zone on Server1.B. Modify the zone type of adatum.com.C. Modify the Zone Transfers settings of adatum.com.D. Add Server1 to the DNSUpdateProxy group.E. Create a primary zone on Server1. Answer: AC QUESTION 548Your company has one main office and four branch offices. The main office contains a standard primary DNS zone named adatum.com. Each branch office contains a copy of the adatum.com zone. When records are added to the adatum.com zone, you discover that it takes up to one hour before the changes replicate to each zone in the branch offices. You need to minimize the amount of time it takes for the records to be updated in the branch offices. What should you do? A. On the DNS server in the main office, configure the Notify settings.B. On the DNS servers in the branch offices, configure the Notify settings.C. On the DNS servers in the branch offices, configure the Zone Aging/Scavenging Properties.D. On the DNS server in the main office, configure the Zone Aging/Scavenging Properties. Answer: A QUESTION 549Your network contains an Active Directory domain named contoso.com. The domain contains a domain controller named DC1. DC1 has the DNS namespaces configured as shown in the following table.

Namespace name	Configuration
Contoso.com	Active Directory-integrated zone
Fabrikam.com	Stub zone
Treyresearch.net	Conditional forwarder
Adatum.com	Secondary zone

In the table below, identify which queries will have an authoritative or non-authoritative response from DC1. Make only one selection in each row.

Query	Authoritative	Non-authoritative
Host (A) queries for adatum.com	<input type="radio"/>	<input type="radio"/>
Host (A) queries for treyresearch.net	<input type="radio"/>	<input type="radio"/>
Alias (CNAME) queries for fabrikam.com	<input type="radio"/>	<input type="radio"/>
Name server (NS) queries for fabrikam.com	<input type="radio"/>	<input type="radio"/>

Answer:

Query	Authoritative	Non-authoritative
Host (A) queries for adatum.com	<input checked="" type="checkbox"/>	<input type="checkbox"/>
Host (A) queries for treyresearch.net	<input type="checkbox"/>	<input checked="" type="checkbox"/>
Alias (CNAME) queries for fabrikam.com	<input type="checkbox"/>	<input checked="" type="checkbox"/>
Name server (NS) queries for fabrikam.com	<input checked="" type="checkbox"/>	<input type="checkbox"/>

QUESTION 550 Your network contains an Active Directory domain named contoso.com. You have a server named Server1 that is configured as an enterprise root certification authority (CA). You need to ensure that private keys can be archived on Server1. Which three actions should you perform in sequence? (To answer, move the appropriate three actions from the list of actions to the answer area and arrange them in the correct order.)

Actions	Answer Area
Enroll for a certificate based on the Key Recovery Agent certificate template.	
Add the Key Recovery Agent certificate template to the Certificate Templates list.	
Add the EnrollmentAgent certificate template to the Certificate Templates list.	
Modify the Extensions settings from the properties of the CA.	
Modify the Recovery Agents settings from the properties of the CA.	

Answer:

Actions	Answer Area
Enroll for a certificate based on the Key Recovery Agent certificate template.	Add the EnrollmentAgent certificate template to the Certificate Templates list.
Add the Key Recovery Agent certificate template to the Certificate Templates list.	Enroll for a certificate based on the Key Recovery Agent certificate template.
Add the EnrollmentAgent certificate template to the Certificate Templates list.	Modify the Recovery Agents settings from the properties of the CA.
Modify the Extensions settings from the properties of the CA.	
Modify the Recovery Agents settings from the properties of the CA.	

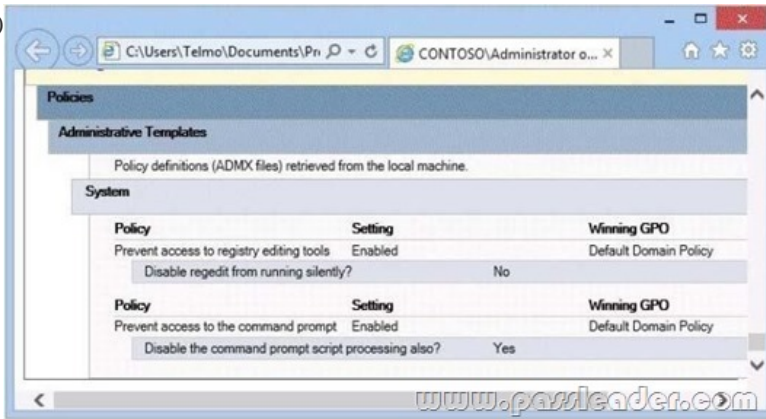
Why Not Try **PassLeader** New Premium 70-640 Exam Dumps?

Pass4sure ↓ Banned By Microsoft Not Available	PL PassLeader Leader of IT Certifications ↓ 651 Q&As Price: \$99.99	TEST KING ↓ 199 Q&As Price: \$124.99
---	--	--

BONUS !!!
Free VCE Player
Coupon Code -- CELEB

QUESTION 551 Your network contains an Active Directory domain named contoso.com. The network contains a public key infrastructure (PKI). You deploy a new certificate revocation list (CRL) distribution point (CDP) to a server named Server1. You discover that users cannot download delta CRLs from Server1. You verify that the users can download the complete CRL successfully. You need to ensure that the users can download delta CRLs from Server1.

Which command should you run? A. Appcmd set config "Default Web Site"/section:system.webServer/Security/requestFiltering -allowDoubleEscaping:True B. Appcmd set config "Certificates" /section:system.webServer/Security/requestFiltering -allowDoubleEscaping:False C. Certutil -setreg CACRLDeltaPeriod "Days" D. Certutil -setreg CACRLOverlapPeriod "Days"
 Answer: A QUESTION 552 Your network contains an Active Directory domain named contoso.com. A portion of the Group Policy object (GPO) settings for a computer in the contoso.com domain is configured as shown in the following exhibit. (Click the Exhibit button.)



To answer, complete each statement according to the information presented in the exhibit.

The currently logged on user will be able to run a file that has the ... extension.

- .bat
- .cmd
- .msi

The currently logged on user will be unable to run ...

- cmd.exe.
- dnscmd.exe.
- cmdkey.exe.

Answer: The currently logged on user will be able to run a file that has the ... extension.

- .bat
- .cmd
- .msi

The currently logged on user will be unable to run ...

- cmd.exe.
- dnscmd.exe.
- cmdkey.exe.

QUESTION 553 Your network contains an Active Directory domain named contoso.com. You create two global groups named Group1 and Group2. The group membership of each group is shown in the following table.

Group name	Group members
Group1	User1 User2 User3
Group2	User1 User3

You create the Password Settings objects (PSOs) shown in the following table.

PSO name	Maximum age	Minimum length	Precedence	A
PSO1	60	8	25	User
PSO2	30	10	50	Grou
PSO3	15	12	20	Grou
PSO4	90	8	100	Dom

In the table below, identify which PSOs will apply to User1 and User2. Make only one selection in each column.

PSO	User1	User2
PSO1	<input type="radio"/>	<input type="radio"/>
PSO2	<input type="radio"/>	<input type="radio"/>
PSO3	<input type="radio"/>	<input type="radio"/>
PSO4	<input type="radio"/>	<input type="radio"/>

Answer:

PSO	User1	User2
PSO1	<input type="radio"/>	<input type="radio"/>
PSO2	<input checked="" type="radio"/>	<input checked="" type="radio"/>
PSO3	<input type="radio"/>	<input type="radio"/>
PSO4	<input type="radio"/>	<input type="radio"/>

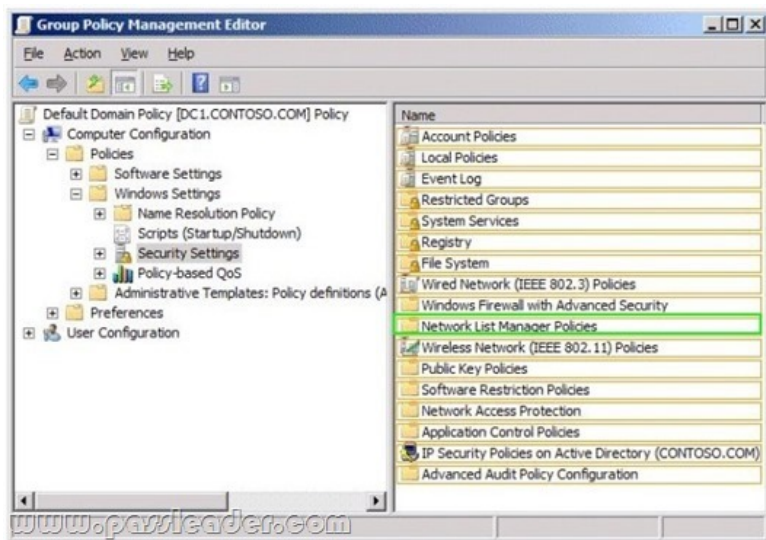
QUESTION 554 Your network contains an Active Directory domain named contoso.com. You need to create one password policy for administrators and another password policy for all other users. Which tool should you use? A. Group Policy Management Editor B. Authorization Manager C. Dsaddsi D. Ldifde
 Answer: D Explanation:

<http://technet.microsoft.com/en-US/library/cc754461.aspx>

QUESTION 555 Your network contains an Active Directory domain named contoso.com. Members of the sales department are issued laptops that have wireless network cards. You need to ensure that when users connect to an unidentified network from their laptop, the network is configured as a Public network. Which node in Group Policy Management Editor should you use? To answer, select the appropriate node in the answer area.



Answer:



QUESTION 556 Your network contains an Active Directory domain named contoso.com. The domain contains an organizational unit (OU) named SalesUsers. The OU contains 50 user accounts. You need to identify the effective Password Settings object (PSO) of each user in the SalesUsers OU. Which command should you run? (To answer, select the appropriate options in the answer area.)

Dsget ou
 Dsget user
 Dsquery ou
 Dsquery user

Answer:

QUESTION 557 Your network contains an Active Directory forest named contoso.com. The forest contains one domain. The domain contains three domain controllers. The domain controllers are configured as shown in the following table.

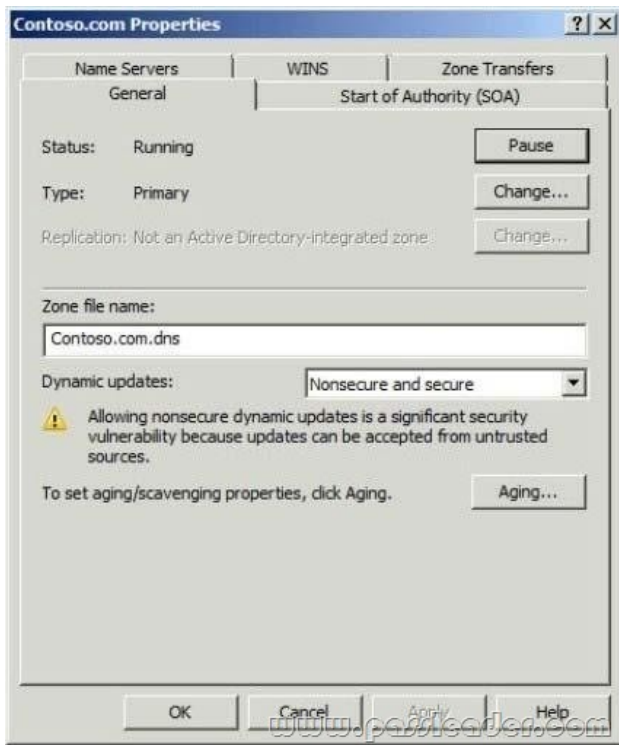
Name	FSMO roles
DC1	PDC emulator
DC2	RID master Schema master Infrastructure master Domain naming master
DC3	No current roles

DC2 fails and cannot be recovered. Several weeks later, administrators report that they can no longer create new users and groups in the domain. You need to ensure that the administrators can create new users and groups. What should you add?
 A. the RID master role to DC3
 B. the schema master role to DC1
 C. the infrastructure master role to DC1
 D. the domain naming master role to DC3

Answer: A QUESTION 558 Your network contains an Active Directory domain. The domain contains eight domain controllers. You need to verify that all the domain controllers can connect to the time server. Which command should you run?
 A. netdom.exe query fsmo
 B. dcdiag.exe /e /test:TopologyC
 C. repadmin.exe /showrepl *D
 D. dcdiag.exe /a

Answer: D QUESTION 559 Your company has a main office and 40 branch offices. Each branch office is configured as a separate Active Directory site that has a dedicated read-only domain controller (RODC). You need to identify the user accounts that can be cached on the RODC server. Which utility should you use?
 A. Dsmod.exe
 B. Repadmin.exe
 C. Active Directory Domain and Trusts
 D. Active Directory Sites and Services

Answer: B QUESTION 560 Your network contains an Active Directory domain named contoso.com. The properties of the contoso.com DNS zone are configured as shown in the exhibit. (Click the Exhibit button.)



You need to update the Host (A) record for a domain controller in the domain. What should you do? A. Restart the Netlogon service. B. Restart the DNS Client service. C. Run sc.exe and specify the triggerinfo parameter. D. Run ipconfig.exe and specify the /registerdns parameter. Answer: D

Why Not Try **PassLeader New Premium 70-640 Exam Dumps?**

Pass4sure	PL PassLeader	TEST KING
Banned By Microsoft Not Available	Leader of IT Certifications 651 Q&As Price: \$99.99	199 Q&As Price: \$124.99
	BONUS !!! Free VCE Player	
	Coupon Code -- CELEB	

<http://www.passleader.com/70-640.html>